



by Office DEPOT  
3366 E. Willow St.  
Signal Hill CA 90755

Mike Bennett  
310.920.8208 ph  
mike.bennett@workspaceinteriorsod.com

# Proposal

Date: 11/11/2021  
Reference #: 558734

**Sandra Zamora:818 832-0773**  
CITY OF LA LAPD  
10250 ETIWANDA AVE  
NORTHRIDGE CA 91324

## LAPD Devonshire Division - Option 2

Item	Qty	Product	Sell Price:	Unit	Extended
<b>CLO</b>					
1	3	42Wx24D Rectangle Worksurface		\$130.08	\$390.24
		Select Top Laminate Color	...	Skipped Option	
2	3	60Wx30D Rectangle Worksurface		\$189.60	\$568.80
		Select Top Laminate Color	...	Skipped Option	
3	3	Flagship B/F Mobile Ped 22H x15W x 22-7/8D/R Pull		\$329.76	\$989.28
		Lock/Omt Opts	.X	Omt Core to Order Key Alike	
		Select Paint Color	\$(P1)	P1 Paint Opts	
		Select Grade 1 Paint	...	Skipped Option	
4	3	Contain Satin Removable Lock Core Kit		\$26.40	\$79.20
		Select Key Number	...	Skipped Option	
5	3	Satin Removable Lock Core Kit		\$19.68	\$59.04
		Select Key Number	...	Skipped Option	
6	3	Flat Bracket 18D		\$36.00	\$108.00
		Select Color Option	.S	Color: Charcoal	
7	3	Ignition 2 Task Low-back, ilira back		\$358.56	\$1,075.68
		Control Type	.Y1	Syncho-Tilt W Seat Slider	
		Select Arm Type	.V	Arm: All-Adjustable Arm	
		Select Caster/Glide Option	.H	Hard Caster	
		Select Mesh Color	.IR	Back: Regatta	
		Select Upholstery	\$(1)	Gr 1 UPH	
		Upholstery Selection	...	Skipped Option	
		Select Lumbar	.BL	Black Adjustable Lumbar	
		Select base	.SB	Base: Standard Base	
		Select Frame Color	.T	Frame: Black	



by Office DEPOT  
3366 E. Willow St.  
Signal Hill CA 90755

Mike Bennett  
310.920.8208 ph  
mike.bennett@workspaceinteriorsod.com

**Sandra Zamora:818 832-0773**  
CITY OF LA LAPD  
10250 ETIWANDA AVE  
NORTHRIDGE CA 91324

# Proposal

Date: 11/11/2021  
Reference #: 558734

## LAPD Devonshire Division Option 2

Item	Qty	Product		Sell Price:	Unit	Extended
8	3	24"D x 28"H O-Leg Support for Wksf (single leg)			\$187.68	\$563.04
		Select Paint Color	\$(P1)	P1 Paint Opts		
		Select Grade 1 Paint	...	Skipped Option		
9	6	30"D x 28"H O-Leg Support for Wksf (single leg)			\$207.84	\$1,247.04
		Select Paint Color	...	Skipped Option		
10	3	WM Tackboard for 42W WM Overhead			\$143.04	\$429.12
		Fabric Selection	~	Undecided FABRIC Option		
11	3	42"W External Stiffener			\$56.16	\$168.48
		Select Color Option	.P	Color: Black		
12	3	42x15x15 Wall Mount Storage lam lk drs			\$508.32	\$1,524.96
		Lock Finish Selection	.SA	Finish: Satin		
		Select Chassis Color	\$(L1STD)	Grd L1 Standard Laminates		
		Select Chassis Color	~	Undecided LAMINATE Option		
		Select Front Color	...	Skipped Option		
13	3	Contain 15x24 Pedestal Cushion			\$117.12	\$351.36
		Select Upholstery for PSEAT24	...	Skipped Option		
14	1	Wire Mgmnt Clips for wks O-leg 8 Pack			\$58.08	\$58.08
<b>Subtotal</b>						<b>\$7,612.32</b>
<b>MAIN_OPT2</b>						
15	9	Flagship B/F Mobile Ped 22H x15W x 22-7/8D/R Pull			\$329.76	\$2,967.84
		Lock/Omt Opts	.X	Omt Core to Order Key Alike		
		Select Paint Color	\$(P1)	P1 Paint Opts		
		Select Grade 1 Paint	...	Skipped Option		



by Office DEPOT  
 3366 E. Willow St.  
 Signal Hill CA 90755

Mike Bennett  
 310.920.8208 ph  
 mike.bennett@workspaceinteriorsod.com

# Proposal

Date: 11/11/2021  
 Reference #: 558734

**Sandra Zamora:818 832-0773**  
 CITY OF LA LAPD  
 10250 ETIWANDA AVE  
 NORTHRIDGE CA 91324

## LAPD Devonshire Division Option 2

Item	Qty	Product	Sell Price:	Unit	Extended
16	5	Left-hand Cantilever 24"D		\$25.92	\$129.60
		Select Paint Color	\$(P1)	Select P1 Paint	
		Select Grade 1 Paint	...	Skipped Option	
17	3	Right-hand Cantilever 24"D		\$25.92	\$77.76
		Select Paint Color	\$(P1)	Select P1 Paint	
		Select Grade 1 Paint	...	Skipped Option	
18	18	Contain Satin Removable Lock Core Kit		\$26.40	\$475.20
		Select Key Number	...	Skipped Option	
19	9	Electrical Power Harness 30W 3-1 & 2-2 Systems		\$116.16	\$1,045.44
20	14	Electrical Power Harness 48W 3-1 & 2-2 Systems		\$122.40	\$1,713.60
21	2	Electrical Jumper Cable 3-1 and 2-2 system		\$79.20	\$158.40
22	9	Circuit 1		\$24.48	\$220.32
		Select Color	...	Skipped Option	
23	9	Circuit 2		\$24.48	\$220.32
		Select Color	...	Skipped Option	
24	9	Circuit 3		\$24.48	\$220.32
		Select Color	...	Skipped Option	
25	9	Circuit 4		\$24.48	\$220.32
		Select Color	...	Skipped Option	



by Office DEPOT  
 3366 E. Willow St.  
 Signal Hill CA 90755

Mike Bennett  
 310.920.8208 ph  
 mike.bennett@workspaceinteriorsod.com

**Sandra Zamora:818 832-0773**  
 CITY OF LA LAPD  
 10250 ETIWANDA AVE  
 NORTHRIDGE CA 91324

**Proposal**

Date: 11/11/2021  
 Reference #: 558734

**LAPD Devonshire Division Option 2**

Item	Qty	Product	Sell Price:	Unit	Extended
26	2	Base In-Feed Cable Base 3-1 & 2-2 Systems		\$129.60	\$259.20
27	4	Electrical Mounting Brackets (PK of 12)		\$36.00	\$144.00
		Select Color Option .P Color: Black			
28	5	Flat Bracket 24D		\$36.96	\$184.80
		Select Color Option .S Color: Charcoal			
29	4	Flat Bracket 24D		\$36.96	\$147.84
		Select Color Option .S Color: Charcoal			
30	18	Data Electrical Port Kit (same colors as recep)		\$14.40	\$259.20
		Select Color ... Skipped Option			
31	9	Ignition 2 Task Low-back, ilira back		\$358.56	\$3,227.04
		Control Type .Y1 Syncho-Tilt W Seat Slider			
		Select Arm Type .V Arm: All-Adjustable Arm			
		Select Caster/Glide Option .H Hard Caster			
		Select Mesh Color .IR Back: Regatta			
		Select Upholstery \$(1) Gr 1 UPH			
		Upholstery Selection ... Skipped Option			
		Select Lumbar .BL Black Adjustable Lumbar			
		Select base .SB Base: Standard Base			
		Select Frame Color .T Frame: Black			
32	9	29 1/2"Hx30"D Open Leg		\$127.68	\$1,149.12
		Select Paint Color \$(P1) P1 Paint Opts			
		Select Grade 1 Paint ... Skipped Option			
33	9	29 1/2"Hx30"D Open Leg		\$127.68	\$1,149.12



by Office DEPOT  
 3366 E. Willow St.  
 Signal Hill CA 90755

Mike Bennett  
 310.920.8208 ph  
 mike.bennett@workspaceinteriorsod.com

# Proposal

Date: 11/11/2021  
 Reference #: 558734

**Sandra Zamora:818 832-0773**  
 CITY OF LA LAPD  
 10250 ETIWANDA AVE  
 NORTHRIDGE CA 91324

## LAPD Devonshire Division Option 2

Item	Qty	Product	Sell Price:	Unit	Extended
		Select Paint Color	...	Skipped Option	
34	9	Contain 15x24 Pedestal Cushion		\$117.12	\$1,054.08
		Select Upholstery for PSEAT24	...	Skipped Option	
35	4	Abound Variable Height Finished End-Painted 22"		\$45.60	\$182.40
		Select Paint Color	...	Skipped Option	
36	5	Abound Finished End Painted 42"		\$51.36	\$256.80
		Select Paint Color	...	Skipped Option	
37	1	Abound L Connector Painted 42"		\$86.40	\$86.40
		Select Paint Color	\$(P1)	P1 Paint Opts	
		Select Grade 1 Paint	...	Skipped Option	
38	4	Abound Connector T - Painted 42"		\$86.40	\$345.60
		Select Paint Color	...	Skipped Option	
39	3	Abound Finished End Painted 65"		\$58.08	\$174.24
		Select Paint Color	...	Skipped Option	
40	9	Panel Frame 42H x 30W		\$145.44	\$1,308.96
		Select Paint Color	...	Skipped Option	
41	5	Panel Frame 42H x 48W		\$164.64	\$823.20
		Select Paint Color	...	Skipped Option	
42	9	Panel Frame 65H x 48W		\$184.80	\$1,663.20
		Select Paint Color	...	Skipped Option	



by Office DEPOT  
 3366 E. Willow St.  
 Signal Hill CA 90755

Mike Bennett  
 310.920.8208 ph  
 mike.bennett@workspaceinteriorsod.com

# Proposal

Date: 11/11/2021  
 Reference #: 558734

**Sandra Zamora:818 832-0773**  
 CITY OF LA LAPD  
 10250 ETIWANDA AVE  
 NORTHRIDGE CA 91324

## LAPD Devonshire Division Option 2

Item	Qty	Product	Sell Price:	Unit	Extended
43	9	Abound Overhead-Metal Flipper Door 48"		\$357.12	\$3,214.08
		Select Paint Color	\$(P1)	P1 Paint Opts	
		Select Grade 1 Paint	...	Skipped Option	
		Select Lock Option	.X	Lock: Omit Lock	
44	9	Abound Power/Data Fabric Tile 37H x 30W		\$107.04	\$963.36
		Fabric Selection	~	Undecided FABRIC Option	
		Select Grommet Color	...	Skipped Option	
45	9	Abound Fabric Tile 37H x 30W		\$68.16	\$613.44
		Fabric Selection	~	Undecided FABRIC Option	
46	9	Abound Power/Data Fabric Tile 37H x 48W		\$129.60	\$1,166.40
		Fabric Selection	~	Undecided FABRIC Option	
		Select Grommet Color	...	Skipped Option	
47	1	Abound Fabric Tile 37H x 48W		\$90.72	\$90.72
		Fabric Selection	~	Undecided FABRIC Option	
48	18	Abound Fabric Tile 60H x 48W		\$124.80	\$2,246.40
		Fabric Selection	~	Undecided FABRIC Option	
49	9	Abound Top Cap Trim 30"W		\$26.40	\$237.60
		Select Paint Color	...	Skipped Option	
50	14	Abound Top Cap Trim 48"W		\$39.84	\$557.76
		Select Paint Color	...	Skipped Option	
51	18	Systems Rectangular Worksurface Edgeband 30D x 48W		\$246.24	\$4,432.32



by Office DEPOT  
3366 E. Willow St.  
Signal Hill CA 90755

Mike Bennett  
310.920.8208 ph  
mike.bennett@workspaceinteriorsod.com

# Proposal

Date: 11/11/2021  
Reference #: 558734

**Sandra Zamora:818 832-0773**  
CITY OF LA LAPD  
10250 ETIWANDA AVE  
NORTHRIDGE CA 91324

## LAPD Devonshire Division Option 2

Item	Qty	Product	Sell Price:	Unit	Extended
		Select Laminate	~	Undecided LAMINATE Option	
		Select Edgeband Color	.SA	Sterling Ash	
		Select Grommet Color	...	Skipped Option	
				<b>Subtotal</b>	<b>\$33,386.40</b>
<b>SLO</b>					
52	1	48Wx24D Rectangle Worksurface		\$143.52	\$143.52
		Select Top Laminate Color	...	Skipped Option	
53	1	60Wx30D Rectangle Worksurface		\$189.60	\$189.60
		Select Top Laminate Color	...	Skipped Option	
54	1	Flagship B/F Mobile Ped 22H x15W x 22-7/8D/R Pull		\$329.76	\$329.76
		Lock/Omt Opts	.X	Omt Core to Order Key Alike	
		Select Paint Color	\$(P1)	P1 Paint Opts	
		Select Grade 1 Paint	...	Skipped Option	
55	1	Contain Satin Removable Lock Core Kit		\$26.40	\$26.40
		Select Key Number	...	Skipped Option	
56	1	Satin Removable Lock Core Kit		\$19.68	\$19.68
		Select Key Number	...	Skipped Option	
57	1	Flat Bracket 18D		\$36.00	\$36.00
		Select Color Option	.S	Color: Charcoal	
58	1	Ignition 2 Task Low-back, ilira back		\$358.56	\$358.56
		Control Type	.Y1	Syncho-Tilt W Seat Slider	
		Select Arm Type	.V	Arm: All-Adjustable Arm	
		Select Caster/Glide Option	.H	Hard Caster	
		Select Mesh Color	.IR	Back: Regatta	
		Select Upholstery	\$(1)	Gr 1 UPH	



by Office DEPOT  
3366 E. Willow St.  
Signal Hill CA 90755

Mike Bennett  
310.920.8208 ph  
mike.bennett@workspaceinteriorsod.com

# Proposal

Date: 11/11/2021  
Reference #: 558734

**Sandra Zamora:818 832-0773**  
CITY OF LA LAPD  
10250 ETIWANDA AVE  
NORTHRIDGE CA 91324

## LAPD Devonshire Division Option 2

Item	Qty	Product		Sell Price:	Unit	Extended
		Upholstery Selection	...	Skipped Option		
		Select Lumbar	.BL	Black Adjustable Lumbar		
		Select base	.SB	Base: Standard Base		
		Select Frame Color	.T	Frame: Black		
59	1	56-3/8Wx3/4Dx10H ModPanel for 60x30 Desk w/OLegs			\$143.52	\$143.52
		Select Laminate	\$(L1STD)	Grd L1 Standard Laminates		
		Laminate Selection	.LSA1	Sterling Ash		
60	1	24"D x 28"H O-Leg Support for Wksf (single leg)			\$187.68	\$187.68
		Select Paint Color	\$(P1)	P1 Paint Opts		
		Select Grade 1 Paint	...	Skipped Option		
61	2	30"D x 28"H O-Leg Support for Wksf (single leg)			\$207.84	\$415.68
		Select Paint Color	...	Skipped Option		
62	1	WM Tackboard for 48W WM Overhead			\$154.56	\$154.56
		Fabric Selection	~	Undecided FABRIC Option		
63	1	48"W External Stiffener			\$59.04	\$59.04
		Select Color Option	.P	Color: Black		
64	1	48x15x15 Wall Mount Storage lam lk drs			\$549.12	\$549.12
		Lock Finish Selection	.SA	Finish: Satin		
		Select Chassis Color	\$(L1STD)	Grd L1 Standard Laminates		
		Select Chassis Color	.LSA1	Sterling Ash		
		Select Front Color	...	Skipped Option		
65	1	Contain 15x24 Pedestal Cushion			\$117.12	\$117.12
		Select Upholstery for PSEAT24	...	Skipped Option		
66	1				\$58.08	\$58.08





by Office DEPOT  
 3366 E. Willow St.  
 Signal Hill CA 90755

Mike Bennett  
 310.920.8208 ph  
 mike.bennett@workspaceinteriorsod.com

**Sandra Zamora:818 832-0773**  
 CITY OF LA LAPD  
 10250 ETIWANDA AVE  
 NORTHRIDGE CA 91324

**Proposal**

Date: 11/11/2021  
 Reference #: 558734

**LAPD Devonshire Division Option 2**

Item	Qty	Product	Sell Price:	Unit	Extended
		Wire Mgmt Clips for wks O-leg 8 Pack			
				<b>Subtotal</b>	<b>\$2,788.32</b>
<b>ZZ_INSTALL</b>					
67	1	Labor to Receive Deliver and Install per proposal		\$5,698.57	\$5,698.57
All work during Regular Business Hours No stair carry Area to be free and clear Non-Union Labor					
				<b>Subtotal</b>	<b>\$5,698.57</b>
				9.5% Los Angeles CA Estimated Sales Tax *Actual Sales Tax Applied At Invoicing*	\$4,701.13
				<b>Total:</b>	<b>\$54,186.74</b>



by Office DEPOT  
3366 E. Willow St.  
Signal Hill CA 90755

Mike Bennett

310.920.8208 ph  
mike.bennett@workspaceinteriorsod.com

**Sandra Zamora:818 832-0773**

CITY OF LA LAPD  
10250 ETIWANDA AVE  
NORTHRIDGE CA 91324

# Proposal

Date: 11/11/2021  
Reference #: 558734

## LAPD Devonshire Division Option 2

Item	Qty	Product	Sell Price:	Unit	Extended
------	-----	---------	-------------	------	----------

### Proposal Notes

### Deposit Required:

### Additional Information:



by Office DEPOT.  
3366 E. Willow St.  
Signal Hill CA 90755

Mike Bennett  
310.920.8208 ph  
mike.bennett@workspaceinteriorsod.com

**Sandra Zamora:818 832-0773**  
CITY OF LA LAPD  
10250 ETIWANDA AVE  
NORTHRIDGE CA 91324

# Proposal

Date: 11/11/2021  
Reference #: 558734

## LAPD Devonshire Division Option 2

Item	Qty	Product	Sell Price:	Unit	Extended
------	-----	---------	-------------	------	----------

### TERMS AND CONDITIONS OF PURCHASE (FURNITURE)

- Office Depot, Inc. ("Office Depot") shall make commercially reasonable efforts to install all products as quickly as possible. However, any delivery and/or installation dates quoted to Customer are approximate, and Office Depot's obligation shall be only to deliver and/or install the products within a reasonable time. Also, due to certain factory shipment schedules, it is possible that Office Depot will be able to deliver and install portions of the job in phases. Customer will be invoiced for the items as they are delivered and payment will be due as set forth in Section 3 below.
- All prices are firm for thirty (30) days from date of proposal.
- Payment terms are net twenty (20) days from date of invoice, unless otherwise agreed to and as documented on the order or quote. Customer will be invoiced for items when delivery and installation (if applicable) is complete, and any punch issues are less than 10% of the value of the entire order. In no event shall payment be withheld for delivered products and services. Customer shall pay 90% of the invoice and may withhold 10% until completion of the job. The balance is payable immediately after any outstanding issues are resolved.
- All orders are subject to credit approval.
- Office Depot requires a minimum deposit equaling 50% on all orders over \$20,000. Said deposit will be applied to Customer's account until such product is delivered and invoiced. Each invoice, less its proportionate share of the deposit, will be due and payable as set forth in Section 4 above.
- All products and materials are subject to applicable taxes, as well as any applicable inbound freight and fabrication charges.
- An order is not cancelable once in production. "Quick ships" and fabric orders are not cancelable.
- Any quotation for special order products or materials shall be approved by an authorized Customer representative for correct product number, fabric, specifications and quantities. Any services rendered to Customer to change or modify the specification and layout before or during installation will be charged to Customer at prevailing rates. If such changes or modifications result in additional products, parts, materials or labor, they will be billed to Customer at prevailing rates.
- Delivery and installation services are conducted during normal business hours of 8:00 a.m. to 5:00 p.m., Monday through Friday. If services are requested outside of normal business hours, if special handling or equipment is required, if moving of products other than delivered is required, or if there are any unusual condition not made known to Office Depot at the time of sale, extra labor charges at prevailing rates may apply.
- If during installation, additional products are necessary or required to complete the job, such additional products and labor will be charged to Customer at prevailing rates.
- Electric current, heat, hoisting and/or elevator service will be furnished without charge to Office Depot.
- Floors shall be smooth, level and free from debris, and concrete subject to dampness shall be waterproofed prior to delivery and installation of products.
- If Customer is unwilling or unable to accept delivery or installation of the products according to the specified schedule, the products will be stored at Customer's expense. Customer shall pay a warehouse charge payable monthly. Double handling of a product will be charged at our normal hourly rate.
- Office Depot makes no warranties, expressed or implied, as to merchantability or as the suitability of the products for any particular purpose, except those made by the manufacturer of the products. Any claim must be made to Office Depot in writing within five (5) days after delivery or installation of the products and if no claim is so received by Office Depot it will be conclusively presumed that Customer has accepted and that the products are as represented.
- No liability shall accrue against Office Depot as a result of breach of terms and conditions caused by any strike, act of God, lockout, accident, or delay beyond its control.
- Office Depot retains, and Customer hereby grants to Office Depot, a security interest in the products to secure the purchase price therefore. The products shall remain personal property regardless of being fixed to any real property. If Customer defaults in the payment of the purchase price when due, Office Depot shall have all rights and remedies granted by the Uniform Commercial Code. A finance charge of 2% per month (annual percentage rate 24%) will be charged on all past due balances. Customer shall pay all collection costs, including attorneys fee, in the event any claim is referred to a collection agency or attorney.
- Products shipped directly to Customer shall be the responsibility of Customer except if agreed in writing that Office Depot will provide delivery and installation services. The receiving Customer is responsible to inspect products and file any necessary freight claims with freight provider.
- Manufacturer warranties apply for parts only. Labor is not included.
- It is Customer's responsibility to furnish a certified electrician to "hardwire" cubicle stations to building power.
- All items set forth in the quotation are non-returnable.
- IN NO EVENT SHALL EITHER PARTY BE LIABLE FOR CONSEQUENTIAL, SPECIAL, INDIRECT OR INCIDENTAL DAMAGES, WHETHER IN AN ACTION BASED ON CONTRACT, TORT (INCLUDING NEGLIGENCE) OR ANY OTHER LEGAL THEORY, EVEN IF THE PARTY HAS BEEN ADVISED OF THE POSSIBILITY OF SUCH DAMAGES.
- Each party shall indemnify and hold harmless the other party from and against any and all third-party claims, demands, actions, suits, losses, liabilities, damages and all related costs and expenses, including without limitation reasonable attorneys' fees due to, arising from or relating to the negligent, willful or reckless act or omission of the indemnifying party.
- These terms and conditions shall be governed by the law of the State of Florida, without regard to conflict of laws principles.

Customer has read and understands these terms and conditions of purchase.

Customer: \_\_\_\_\_ Customer PO#: \_\_\_\_\_

Customer's Signature: \_\_\_\_\_ Title: \_\_\_\_\_

Print Name: \_\_\_\_\_ Date: \_\_\_\_\_



by Office DEPOT  
3366 E. Willow St.  
Signal Hill CA 90755

Mike Bennett  
310.920.8208 ph  
mike.bennett@workspaceinteriorsod.com

**Sandra Zamora:818 832-0773**  
CITY OF LA LAPD  
10250 ETIWANDA AVE  
NORTHRIDGE CA 91324

# Proposal

Date: 11/11/2021  
Reference #: 558734

## LAPD Devonshire Division Option 2

Item	Qty	Product	Sell Price:	Unit	Extended
------	-----	---------	-------------	------	----------

**Special Instructions:**

Proposal valid for 30 days

Financing options available, ask our team about our **Furniture Leasing Program**.

Please note: a deposit is required on all furniture orders prior to order placement

One of the following is required prior to placing your order: Signed Terms and Condition, Furniture Agreement on file or a Workspace Interiors Furniture Addendum on file

Workspace Interiors may require additional credit information, prior to placing your order

The appropriate tax will be applied at the time of invoicing

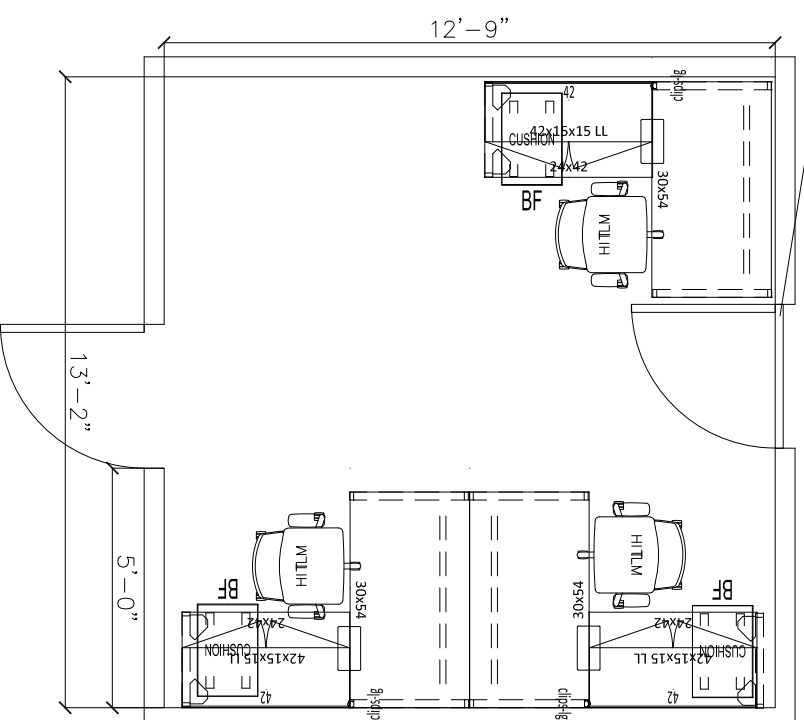
This proposal contains **Special Order** items that are **Not Returnable**

Once an order is placed, cancellations are **Not Allowed**.

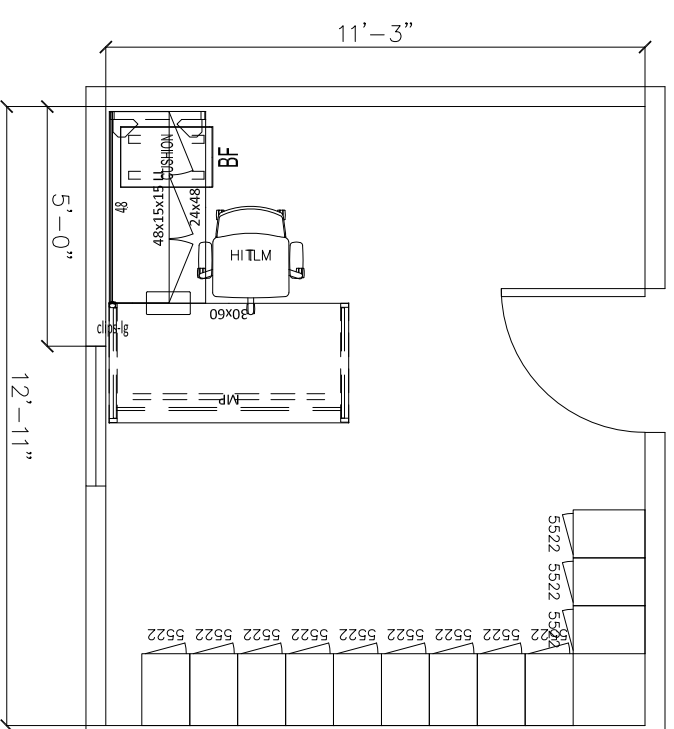
Estimated leadtime is subject to the manufactures production / shipping schedule

# CLO COMM RELATIONS

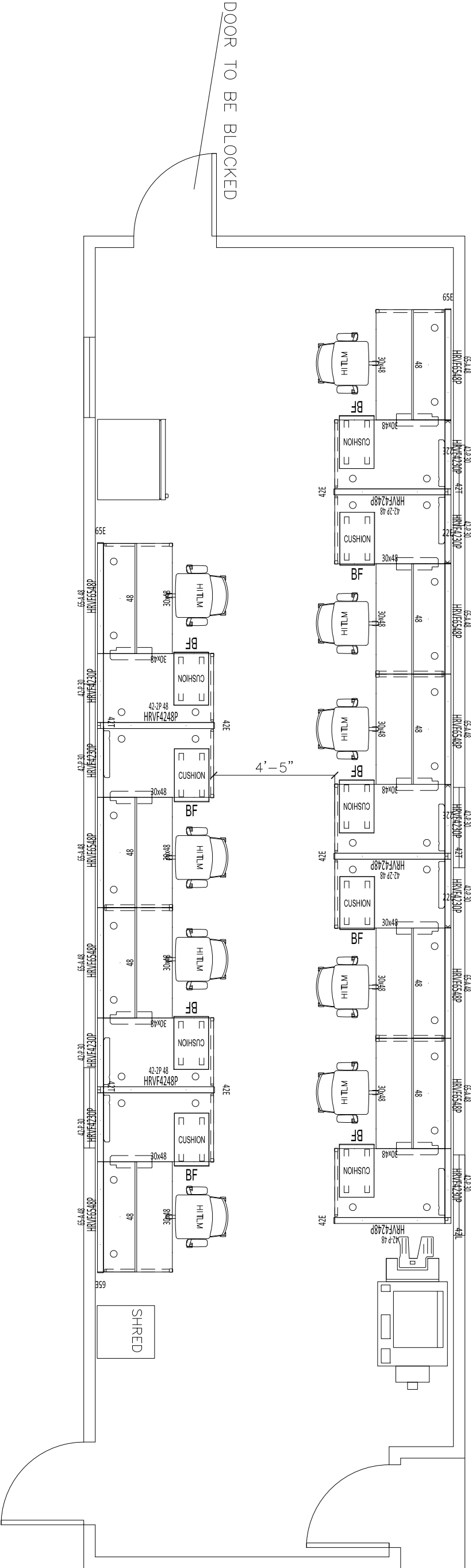
DOOR TO BE BLOCKED



# SLO OFFICE







City of LA  
LAPD  
Devonshire Station Area A81  
Panel Systems Option

DATE: 21 OCT 21  
SCALE: 1/4"=1'-0"  
SALES: M.BENNETT  
DESIGNER: R.GERALDS

SHEET: